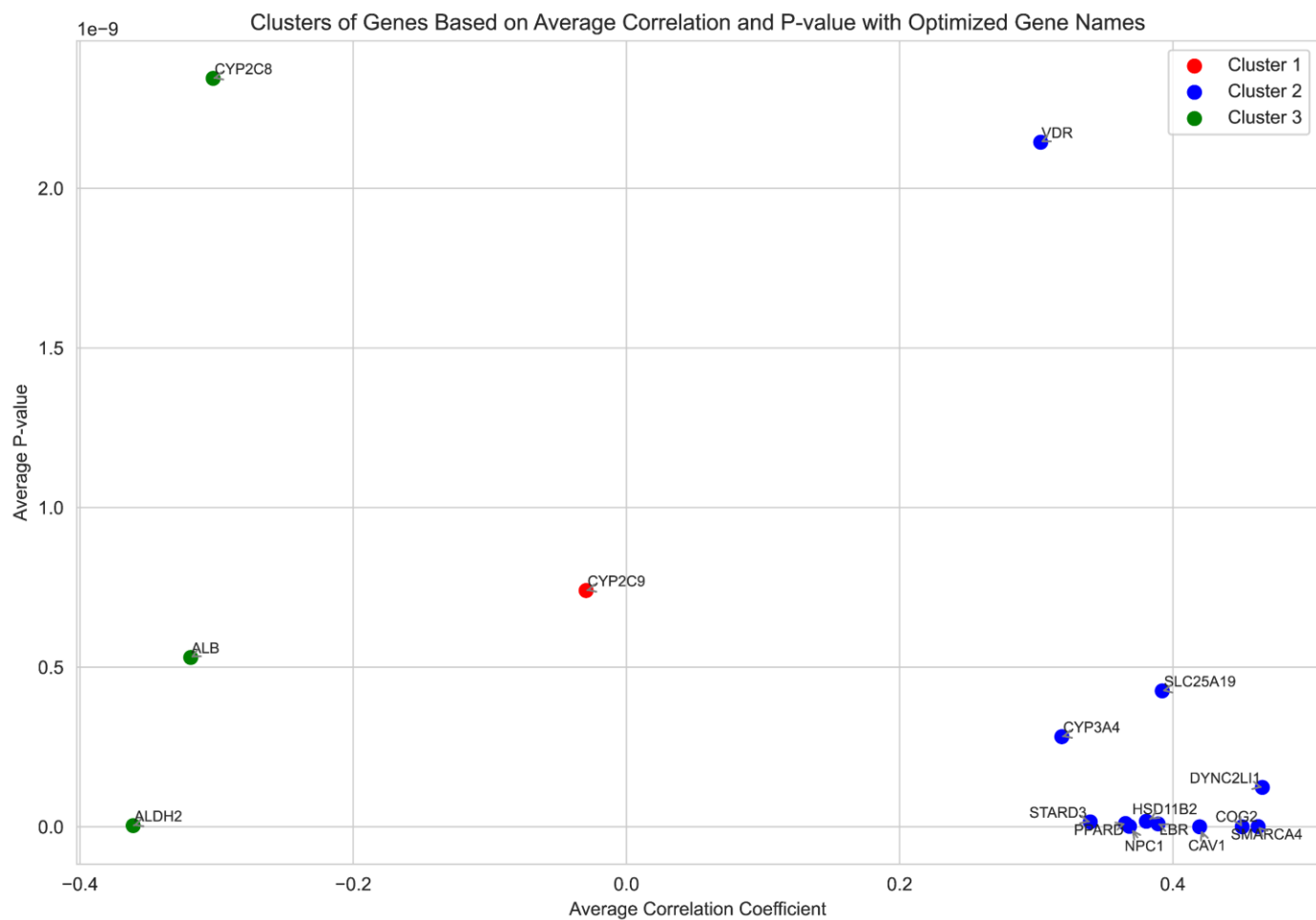
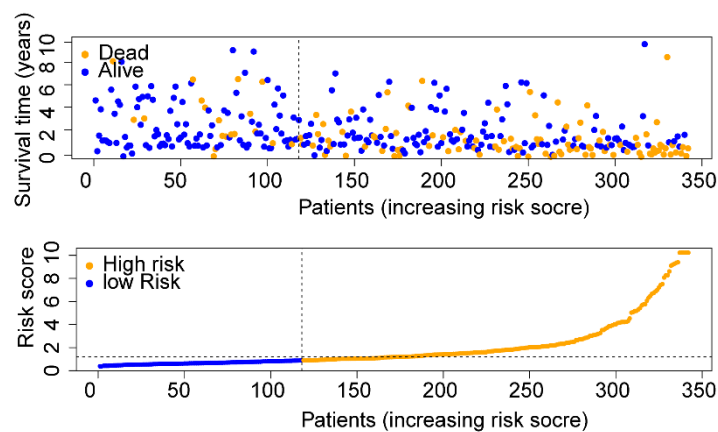
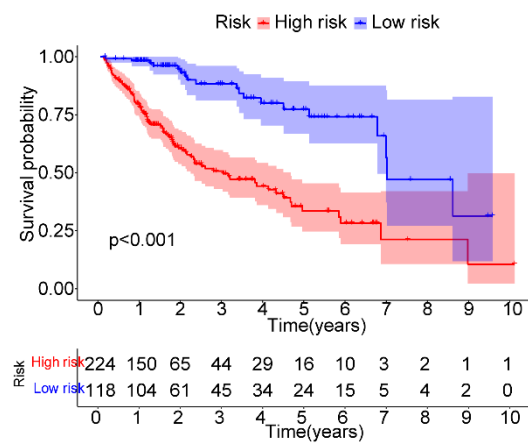


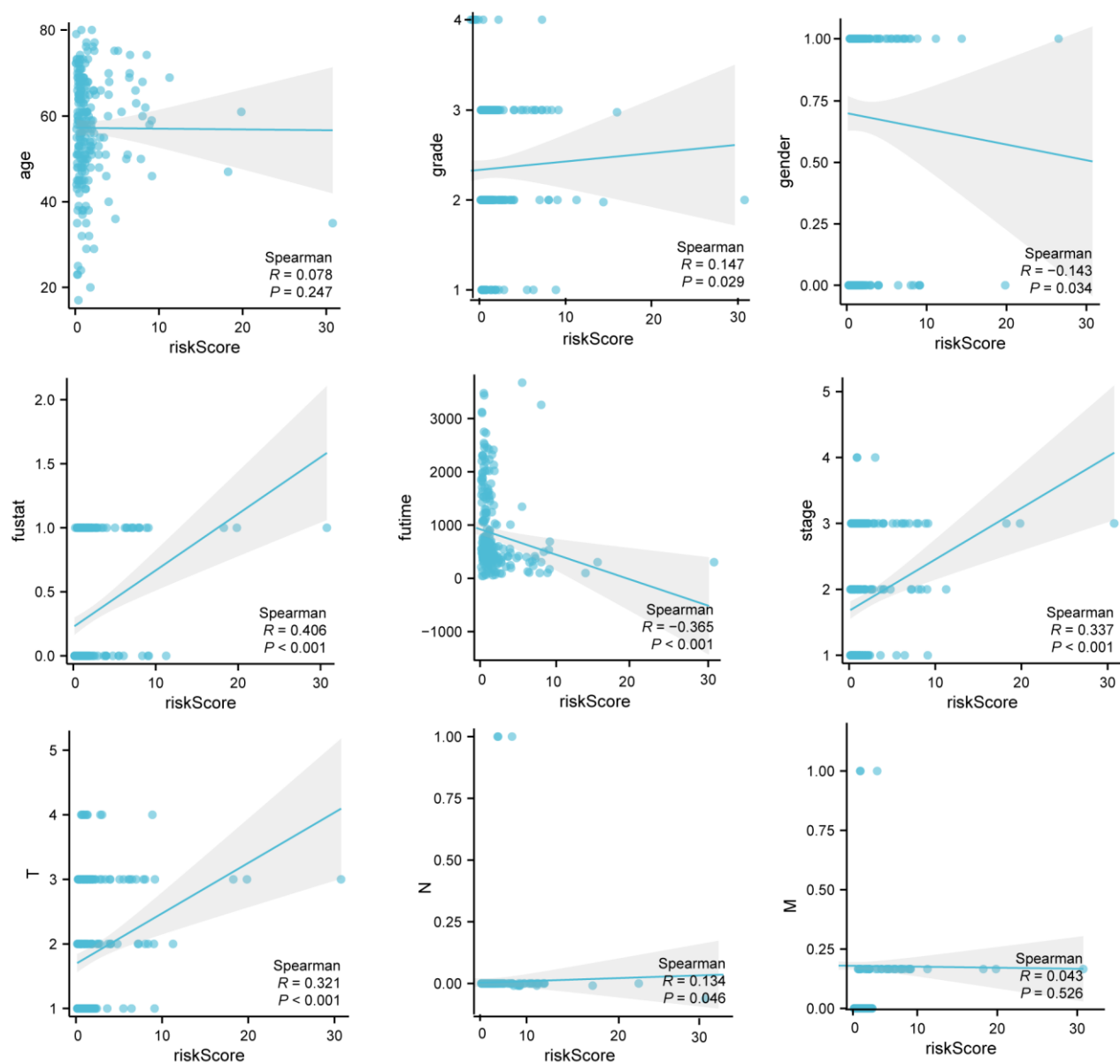
Supplementary Fig. 1. Univariate Cox regression analysis revealed that 52 lncRNAs were related to the prognosis of HCC patients



Supplementary Fig. 2: An additional k-means cluster analysis to divide the associated protein into 3 subgroups.



Supplementary Fig. 3: the KM analysis by taking the cutoff value of the risk scores at the maximum of the Youden-Index.



Supplementary Fig. 4: Spearman correlation analyses the between relationship between risks core and clinical characteristics.